



# Person Specification

## Post: Midday Supervisor

A – Application I - Interview

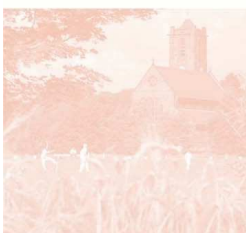


<b>Knowledge</b>	<b>E = Essential D = Desirable</b>	<i>Identified by</i>
Knowledge and understanding of child development	D	A I
Awareness and an understanding of issues of inclusion, especially with a school setting.	E	A I
Training in First Aid	D	A I
<b>Skills and Abilities</b>	<b>E = Essential D = Desirable</b>	<b>Identified by</b>
Ability to work effectively within a team environment.	E	A I
Ability to build effective working relationships with all pupils and colleagues	E	A I
Ability to promote a positive ethos and promote a positive attitude as a role model	E	A I
Ability to work with children at all levels regardless of specific individual need e.g. individual learning styles	E	A I
Ability to promote the positive values, attitudes and behaviour that are expected from the pupils with whom they work in accordance with the schools aims	E	A I



# Person Specification

## Post: Midday Supervisor



<b>Qualifications</b>	<b>E= Essential D= Desirable</b>	
First Aid Qualification	D	A I
<b>Experience</b>	<b>E = Essential D = Desirable</b>	<b>Identified by</b>
Working with children in an educational setting	D	A I
<b>Professional Values and Practice</b>	<b>E= Essential D= Desirable</b>	<b>Identified by</b>
Must be able to demonstrate all of the following:  Ability to understand, build and maintain successful relationships with pupils and colleagues, treat them consistently, with respect and consideration, and demonstrate concern for their development as learners.	E	A I
<b>Special Attributes required of the Candidate</b>	<b>E = Essential D = Desirable</b>	<b>Identified by</b>
Participate in relevant training and development opportunities	E	A I
Undertake appointed person certificate in first aid administration	D	A I